



# BROCK BNB



[www.brockbnb.com](http://www.brockbnb.com)

GUEST

*Guidebook*



# WELCOME

*Make yourself at home*

Hello,

We are delighted to have you here!

To make your stay as comfortable and enjoyable as possible, please feel free to reach out if you need anything, or if you have any questions. If something isn't quite right, or perhaps not working, please let us know whilst you are here so we have the opportunity to put it right.

You can reach us by sending a message via the Airbnb app, or you can call us using your in-room control panel. Simply swipe to the right to reach the calling options.

We've prepared this Guest Guidebook to help you make the most of your time here. It's filled with helpful information about the room, the house, and local amenities, including shops, restaurants, and travel tips.

Feel free to download a copy to your device or save the link so that you can access it whilst you are out and about.

We wish you a pleasant stay.

*Luke & Mikey*





*Thank you*

**BrockBnB is more than just a business to us; it is our cherished home and the foundation of our livelihood. We have poured years of hard work, dedication, and care into making it a special place. We are currently facing a daunting legal and financial challenge that threatens our future. If we cannot raise the necessary funds to protect BrockBnB, we risk losing both the business we have built and our beloved home.**

BrockBnB is dedicated to offering a unique, high-end boutique experience at affordable prices. Over the years, we have welcomed more than 2,000 guests, many of whom return regularly, appreciating the quality and comfort we offer. We have always aimed to create a warm and inviting atmosphere that feels both special and accessible. Beyond our business, we also strive to support our local community by providing quality stays at fair prices.

Unfortunately, we are now embroiled in a costly legal dispute that threatens our stability. Although we firmly believe in the strength of our position, the financial burden is overwhelming. The legal process demands significant time and resources, and we are fighting to protect not just our business, but also our home and the continuity we have worked so hard to establish. We are setting a goal to raise £100,000 to cover the urgent costs associated with defending BrockBnB and keeping our home secure. It's a substantial amount, and we wouldn't ask for help if it weren't truly necessary.

We want to be transparent and sincere about our situation. We are not taking this request lightly and are reaching out for support so that we can continue the journey we have started. Every donation, no matter how small, is deeply appreciated and makes a significant difference. If you are unable to donate, you can still help by sharing our story, spreading the word, or considering booking a stay at [brockbnb.com](http://brockbnb.com). Your support in any form means the world to us as we strive to maintain stability and pursue a future we have worked incredibly hard for.

Thank you for taking the time to read our story, and for any support you can offer. Your generosity and kindness truly mean more than we can express.

*Luke & Mikey*

**TAP TO HELP →**

**OR SCAN CODE**



# USEFUL *Info*

We hope you have a great stay with us.  
If we can be of assistance, please ask.



## QUIET HOURS

*23:00-06:00*



## CHECK-OUT BY

*10am*

or keep the room until  
14:00 for £20. Please  
ask in advance.



## FREE WIFI

BrockbnbGuestWiFi

70!Brockbnb



# PRICE

The essential items listed below are available in your room. If you wish to purchase any of them, just tap the buy button to complete your payment. You can also pay in person by cash or card.

List

TOOTHPASTE	.....	£2.50	PAY →
TOOTHBRUSH	.....	£2.50	PAY →
MOUTHWASH	.....	£2.50	PAY →
DEODORANT	.....	£3.00	PAY →
RAZORS	.....	£3.00	PAY →
USB CHARGING CABLE	All phone brands supported .....	£3.00	PAY →
PLUG ADAPTER	EU / US / AU to UK .....	£3.00	PAY →
SIM CARD	Requires credit top up to activate .....	£2.00	PAY →
DRINK CAN	330 ml can .....	£1.00	PAY →

## ENJOY WITH OUR COMPLIMENTS

TEA	.....	FREE
COFFEE	.....	FREE
MILK	.....	FREE
CEREAL	.....	FREE
FILTERED WATER	.....	FREE

# BREAKFAST *time*

Kick start your day with a complimentary breakfast. You'll find a selection of cereals in your room, together with bowls, spoons and fresh milk.

If you need any extra milk, please let us know, or help yourself from the main fridge. Additional cereal portions are also available upon request.

If you have allergies, please let us know before consumption and we will do our best to source suitable options for you.



CHOICES ARE SUBJECT TO AVAILABILITY



www.brockbnb.com

# HOW TO *Contact us*

1

## Message us

Log in to the Airbnb app and message us via the listing. Both of us will be able to see the message.

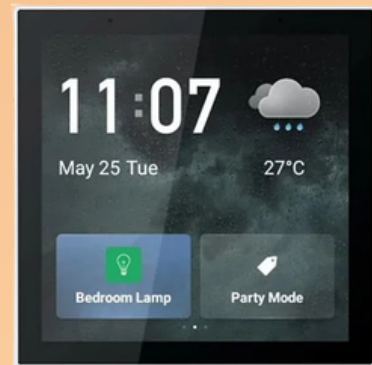


**OR**

2

## Call us

Use your in-room control panel to speak to us. Simply swipe to the call section, select Family Call and tap Luke pr Mikey.



**FOR EMERGENCY  
SERVICES CALL**

**999**



FOR YOUR SAFETY, SECURITY AND WELLBEING



www.brockbnb.com

# Fire & Evacuation PLAN

## in case of fire ☎ 999



You will find a fire extinguisher in your room and a fire blanket in the kitchen area.



Interconnected and tamper proof smoke and heat detectors/alarms are installed throughout the property. If the alarm sounds, leave the property immediately.



Your means of escape are via the ground floor through the front door, back garden door, or window. Lights will automatically come on when an alarm is triggered, but should this fail, you will find a torch in your room.

### KEEP SAFE TIPS:

- Assess your means of escape and your closest exit upon arrival.
- Turning electrical devices off at the mains when not in use.
- Keep your guestroom clutter free and dispose of combustibles correctly.
- Keep bathroom, cupboard, and guestroom doors closed, especially sleeping.



FOR YOUR SAFETY, SECURITY AND WELLBEING



www.brockbnb.com

# Accidents & EMERGENCIES

EMERGENCY  
LINE



ADVICE  
LINE



**HOSPITAL**



**KINGSTON HOSPITAL**

OPEN 24h

Galsworthy Road, Kingston-Upon-Thames, KT2 7QB  
+44(0)2085467711

**DIRECTIONS** →

**PHARMACY**



**CONCEPT CHEMIST**

MON-FRI 09:00-19:00, SAT 09:00-17:00, SUN CLOSED

127 Manor Drive North, New Malden, KT3 5PD  
+44(0)2083374618

**DIRECTIONS** →

**FIRST AID**



**A FIRST AID KIT CAN BE FOUND IN OUR KITCHEN**

USE WHAT YOU NEED

Please let us know afterwards so we can  
replace whatever was used



FOR YOUR SAFETY, SECURITY AND WELLBEING



[www.brockbnb.com](http://www.brockbnb.com)

# Smoking & Vaping POLICY

**WE OPERATE A NO-SMOKING POLICY THROUGHOUT THE INTERIOR OF OUR PROPERTY. THIS INCLUDES E-CIGARETTES AND VAPES.**

**YOU MAY SMOKE IN THE BACK GARDEN OR OUT FRONT. PLEASE DO NOT LEAVE LITTER ON THE FLOOR.**



Tamper-proof smoke detectors are fitted throughout the property, including all guest rooms and communal areas.

**ILLEGAL SUBSTANCE, INCLUDING CANNABIS, ARE FORBIDDEN.**

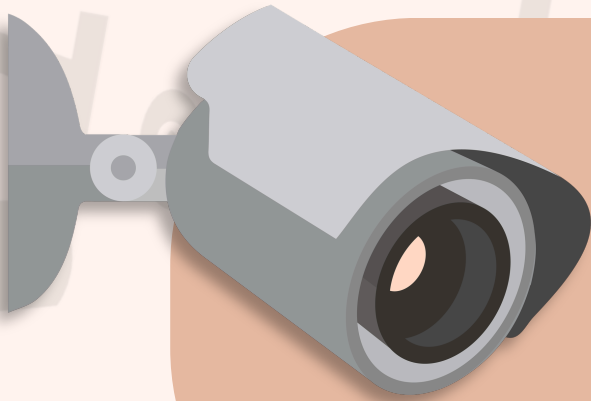


FOR YOUR SAFETY, SECURITY AND WELLBEING



[www.brockbnb.com](http://www.brockbnb.com)

# Security Camera POLICY



For the safety, security, and wellbeing of all our guests, our property, and to protect us as hosts, motion activated CCTV cameras are operational in communal areas.

**THERE ARE NO CAMERAS IN PRIVATE GUEST AREAS WHICH INCLUDES YOUR GUEST ROOM AND BATHROOM.**

● REC

Recordings are automatically deleted after 30 days, unless requested by police.

This is in line with general data handling rules and regulations in the UK.

## CAMERA LOCATIONS

- Entrance and driveway
- Communal hallway
- Kitchen
- Dining Room and Bar
- Laundry area
- Stairs
- Back garden area



**If you have a problem with our security camera policy, please do not stay here.**

Bookings are flexible which means you can cancel and receive a full refund until 24 hours before your due check-in.



FOR YOUR SAFETY, SECURITY AND WELLBEING



[www.brockbnb.com](http://www.brockbnb.com)

# House Rules AND GUIDELINES

To guarantee that every guest enjoys a safe, clean, and pleasant experience with us, we kindly ask that you adhere to the following house rules:

- Only **booked guests** are permitted inside.
- When using the **kitchen** please be considerate of others by limiting your time to a maximum of **60 minutes**, and avoid using it after **21:00**.
- While there is **no curfew**, we have quiet hours from **23:00 to 06:00**. Please keep noise to a minimum during this time.
- **Turn off** lights, appliances, chargers, and other devices when they are not in use.
- Keep **doors and windows closed** to retain heat in colder weather, and make sure to turn off air-conditioning, heaters, and fans when you leave.
- Please **wash** your cups, glasses, dishes, etc., after use.
- Always **lock the main front door** behind you when entering and exiting the property.



# TOWELS & Linen

Upon your arrival, you'll find your bed made with fresh linens. Additionally, your room will have two large, clean towels, along with a small hand towel and a bath mat in your bathroom.

## **IF YOU NEED FRESH TOWELS OR A CHANGE OF LINEN, SIMPLY LET US KNOW.**

Leave any dirty towels and linen outside your bedroom door so we can collect, wash and replace.

## *Checking Out*

When checking out, leave used towels in your bathroom. Clean towels can be left folded in your room. You do not need to strip your bed of linen.

UNRETURNED TOWELS WILL BE CHARGED AT £15 EACH.





www.brockbnb.com

# HOW TO USE THE *Bedroom Door*



To unlock the door, simply tap the black fob on the orange dot.

Once you do this, the door will remain unlocked for five seconds.

It will automatically lock once you close it behind you. For added security, you can use the double lock feature after you're inside.



## REMEMBER YOUR KEY

To avoid being locked out, remember to take your key fob with you every time you leave the room.

At the end of your stay, please leave your key fob anywhere in your room and close the door behind you.






www.brockbnb.com

# HOW TO USE THE *Safe Box*

## REGISTER YOUR ACCESS CODE



- 1** Open the door and then remove the battery cover.
- 2** Press the red button located behind the battery cover.
- 3** Carefully replace the battery cover.
- 4** Enter a PIN number then press  .

## TO UNLOCK

Enter your PIN followed by .

## CHECKING-OUT

PLEASE LEAVE THE DOOR OF THE SAFE BOX  
OPEN WHEN YOU CHECK-OUT. DO NOT LOCK.





www.brockbnb.com

# HOW TO USE THE Washing Machine

You are invited to make use of our washing machine throughout your stay. Complimentary fabric softener and detergent are available for your convenience.

## 1 SWITCH OFF

Make sure the power is switched off and no lights are on. You will be unable to start the wash if the machine is on.

**Please ask if you need any help or if you have any questions.**

## 2 LOAD LAUNDRY

Open the door and load your laundry into the machine. Be sure not to fill it beyond three-quarters full.



Using the washing machine is free, but please fill it up. Washing one item costs as much as a full load.

## 3 ADD LIQUID

Add one capful of detergent and one of softener directly into the machine, then close the door.



## 4 START WASH

With the power still **turned off** hold the blue button down for 5 seconds. The cycle will start automatically.



Don't press any other buttons or use the dial.

**THE MACHINE WILL NOT START IF THE POWER IS ON.**

## 5 END OF CYCLE

If your laundry is very wet at the end of the wash, move the dial to **'spin and drain'** then press **'start'** to begin a 10 min spin.

## DRYING



You will find a drying rack in your guest room that you can use to air your clothes.



On warmer days, you are also welcome to hang your washing out on the line in the garden.



If you need them you can find pegs and baskets in the laundry room.

## HOURS OF USE

AVAILABLE  
06:00  
to  
23:00

Please do not use the washing machine during quiet hours and ensure your wash is done by 23:00.





www.brockbnb.com

# HOW TO USE THE Washing Machine

You are invited to make use of our washing machine throughout your stay. Complimentary fabric softener and detergent are available for your convenience.

## 1 SWITCH OFF

Make sure the power is switched off and no lights are on. You will be unable to start the wash if the machine is on.

**Please ask if you need any help or if you have any questions.**

## 2 LOAD LAUNDRY

Open the door and load your laundry into the machine. Be sure not to fill it beyond three-quarters full.



Using the washing machine is free, but please fill it up. Washing one item costs as much as a full load.

## 3 ADD LIQUID

Add one capful of detergent and one of softener directly into the machine, then close the door.



## 4 START WASH

With the power still **turned off** hold the blue button down for 5 seconds. The cycle will start automatically.



Don't press any other buttons or use the dial.

**THE MACHINE WILL NOT START IF THE POWER IS ON.**

## 5 END OF CYCLE

If your laundry is very wet at the end of the wash, move the dial to **'spin and drain'** then press **'start'** to begin a 10 min spin.

## DRYING



You will find a drying rack in your guest room that you can use to air your clothes.



On warmer days, you are also welcome to hang your washing out on the line in the garden.



If you need them you can find pegs and baskets in the laundry room.

## HOURS OF USE

AVAILABLE  
06:00  
to  
23:00

Please do not use the washing machine during quiet hours and ensure your wash is done by 23:00.





www.brockbnb.com

# USING THE *Microwave Oven*

## GOLDEN RULES

When using the microwave oven in your guest room, please follow these golden rules:

**1**

Do not place anything metallic inside.



**2**

be mindful of smelly foods, such as fish or popcorn.



**3**

Keep it clean and hygienic by washing after use.



Please let us know if you need any help.





www.brockbnb.com

# PREPARING FOR

# Check-Out

**REGULAR  
CHECK  
OUT**

*10am*

**LATE  
CHECK  
OUT**

*2pm*  
£20 fee

1

## GATHER USED TOWELS

Leave used towels in a heap in your bathroom. Any unused towels can be left folded in your guest room. Unreturned towels are charged at £15.

2

## TRASH THE TRASH

Place all trash in the bin within your room. Any excess trash can be placed in the main bins. Don't forget to empty your fridge.

3

## LIGHTS OUT

Switch off any lights and check for anything you might have plugged in.

4

## RETURN YOUR KEY

Place your key on the desk within your room and close the door. Mobile keys and access codes become inactive after check-out.

5

## LOCK UP

As you leave, please remember to lock the main front door behind you by pulling the handle up and wait for the red light.

6

## WRITE A REVIEW

Before you leave, don't forget to write a message in our guest book before and remember to leave a review on Airvbnb.

## SIGN OUR GUESTBOOK

You will find it on the table in the hallway.  
We appreciate your gratuity if you wish to tip.

TAP TO TIP →

*Thank you!*



www.brockbnb.com

# TRAVEL TIPS & Information

## YOU DON'T NEED OYSTER

If you have a contactless Visa, Mastercard, American Express, Apple Pay, or Google Pay, you can travel like with an Oyster card. You'll get the best fare without topping up or registering, with billing at the end of the day. Just tap at the start and end of each journey, but for buses, only tap in.

## USE CITY MAPPER

This free app guides you from your location to your destination using multiple transportation options like tubes, trains, taxis, bikes, trams, scooters, boats, and walking. It offers journey times, prices, disruptions, traffic conditions, and estimated calories burned.

## FREE MAPS

Access useful travel maps. Save them to your phone and take them with you.

BUSES →

BOAT →

RAIL & TUBE →

NIGHT TUBE →

## HOW TO GET TO...

### CENTRAL LONDON

Walk to Malden Manor station and take the train to Waterloo. Trains depart every 30 minutes from around 06:30 to 00:30.

UNLIMITED DAY TRAVEL  
**£10-£15** 25 MINS

### HEATHROW AIRPORT

Walk to Worcester Park station and take the SL7 Superloop Bus to Heathrow Central. Buses run every 15 minutes from around 05:00 to 01:00.

SINGLE JOURNEY  
**£1.75** 60 MINS

### GATWICK AIRPORT

Walk to Malden Manor station and take the train to Clapham Junction. Then take the train to Gatwick Airport. Trains depart every 30 minutes from around 06:00 to 00:30.

SINGLE JOURNEY  
**£15-£20** 60 MINS

### STANSTED AIRPORT

Walk to Malden Manor station and take the train to Vauxhall. Then take the Victoria line to Tottenham Hale. Then take the train to Stansted Airport. Trains do not run there overnight.

SINGLE JOURNEY  
**£25** 120 MINS



20





[www.brockbnb.com](http://www.brockbnb.com)

# INTRODUCING

## *Our Cats*

We also share our home with two delightful cats, Patchi and Perci. They are quite friendly and usually venture outside during the day.

You might also spot a white cat, whom we affectionately call Frank, coming and going during your stay. He belongs to one of our neighbors and is welcome to come inside if you find him hanging around.

**PATCHI**



**PERCY**





www.brockbnb.com

# LOCAL Restaurants

Use the free City Mapper app for directions and travel information.

<b>MILLER &amp; CARTER</b>	£££	<b>Steak and burgers</b>	Church Rd, Worcester Pk, KT4 7RD	10 mins	<a href="#">DIRECTIONS</a> →
<b>TOBY CARVERY</b>	£	<b>Traditional roast &amp; English breakfast</b>	Old Malden Ln, Worcester Pk, KT4 7PY	10 mins	<a href="#">DIRECTIONS</a> →
<b>NANDO'S</b>	£	<b>Chicken</b>	82-86 Central Rd, Worcester Pk, KT4 8HX	15 mins	<a href="#">DIRECTIONS</a> →
<b>PAVILION FISH KITCHEN</b>	££	<b>Traditional Fish &amp; Chips</b>	184 Central Rd, Worcester Pk, KT4 8HQ	15 mins	<a href="#">DIRECTIONS</a> →
<b>OSAKA</b>	3£	<b>Japanese</b>	358 Malden Rd, Worcester Pk, KT4 7NW	10 mins	<a href="#">DIRECTIONS</a> →
<b>PIZZA EXPRESS</b>	£	<b>Pizza and Pasta</b>	87 Central Rd, Worcester Pk, KT4 8HZ	10 mins	<a href="#">DIRECTIONS</a> →
<b>BRONCO'S</b>	£	<b>Burgers, Pizza and Ribs</b>	63-65 Central Rd, Worcester Pk, KT4 8EB	15 mins	<a href="#">DIRECTIONS</a> →
<b>PARK GRILL</b>	££	<b>Mediterranean</b>	156 Central Rd, Worcester Pk, KT4 8HH	15 mins	<a href="#">DIRECTIONS</a> →
<b>COLOMBO KITCHEN</b>	£££	<b>Sri-Lankan</b>	25 Central Rd, Worcester Pk, KT4 8EG	15 mins	<a href="#">DIRECTIONS</a> →
<b>THE BROOK</b>	££	<b>Pub food and fine dining</b>	181 Central Rd, Worcester Pk, KT4 8DR	20 mins	<a href="#">DIRECTIONS</a> →





www.brockbnb.com

# LOCAL SHOPS

## & Services

Use the free City Mapper app for directions and travel information.

GROGERY STORES			
<b>WAITROSE</b>	Stone Pl, Worcester Pk, KT4 8DX	15 mins	<a href="#">DIRECTIONS →</a>
<b>TESCO EXPRESS</b>	354-356 Malden Rd, Worcester PK, KT4 7NW	7 mins	<a href="#">DIRECTIONS →</a>
<b>GO-OP</b>	Manor Dr N, New Malden, KT3 5PN	5 mins	<a href="#">DIRECTIONS →</a>
SHOPPING MALLS			
<b>BENTALL CENTRE</b>	Wood St, Kingston upon Thames, KT1 1TP	30 mins	<a href="#">DIRECTIONS →</a>
<b>ST NICHOLAS</b>	3 St Nicholas Way, Sutton, SM1 1AY	30 mins	<a href="#">DIRECTIONS →</a>
<b>ASHLEY CENTRE</b>	Ashley Rd, Epsom, KT18 5AB	20 mins	<a href="#">DIRECTIONS →</a>
HAIR			
<b>THE HAIR BOUTIQUE</b>	162 Central Rd, Worcester Pk, KT4 8HQ	15 mins	<a href="#">DIRECTIONS →</a>
<b>CUT AND BLEND BARBER SHOP</b>	121 Central Rd, Worcester Pk KT4 8DY	15 mins	<a href="#">DIRECTIONS →</a>
DRY GLEANERS			
<b>QUALITY DRY GLEANERS</b>	127 Central Rd, Worcester Park KT4 8DY	15 mins	<a href="#">DIRECTIONS →</a>
POST OFFICE			
<b>POST OFFICE</b>	178 Central Rd, Worcester PK, KT4 8HQ	15 mins	<a href="#">DIRECTIONS →</a>
PHARMACY			
<b>CONCEPT</b>	127 Manor Dr N, New Malden KT3 5PD	5 mins	<a href="#">DIRECTIONS →</a>
<b>BOOTS</b>	158 Central Rd, Worcester Pk KT4 8HH	15 mins	<a href="#">DIRECTIONS →</a>
<b>SUPERDRUG</b>	107 Central Rd, Worcester Pk, KT4 8DY	15 mins	<a href="#">DIRECTIONS →</a>





www.brockbnb.com

# HOW TO GET TO *Wimbledon Tennis*



IF YOU'RE A TENNIS FAN, VISIT THE RENOWNED ALL ENGLAND LAWN TENNIS CLUB, KNOWN AS WIMBLEDON. IT'S FAMOUS FOR ITS SUMMER CHAMPIONSHIPS AND HAS AN ACCESSIBLE MUSEUM OPEN YEAR-ROUND.

**DIRECTIONS** →

## by Tube and train

Take the train 3 stops from Malden Manor to Wimbledon - this takes around 10 minutes. From there you can either do either of the following:

OPTION 1	Take any District Line train from Wimbledon two stops to to Southfields, followed by a 15 min walk.
OPTION 2	Take a local bus to Wimbledon Village followed by a 10 minute walk.
OPTION 3	Walk from Wimbledon which takes around 25 minutes.

## by Taxi

Take a taxi from our property directly for around £12. The journey will take around 10-20 minutes depending on the time of day.

## by Bike

Use the 'Forest' app to locate a nearby e-bike and enjoy a ride. The journey takes about 25 minutes, and there are typically bikes available on our street or nearby. Forest charges £1 for each ride and an additional £0.29 per minute. However, you can enjoy the first 10 minutes for free every day.

If visiting during the championships, special bus services will depart from Wimbledon station. Arrive very early if you plan to queue for tickets and remember public transport starts around 06:30 so you may wish to consider taking a taxi or cycling.





www.brockbnb.com

# LOCAL LEISURE & Attractions

CINEMA		
<b>ODEON WIMBLEDON</b>	39 The Broadway, The Crescent, SW19 1QB <a href="http://www.odeon.co.uk">www.odeon.co.uk</a>	<b>15 mins</b>
<b>ODEON KINGSTON</b>	The Rotunda, Clarence St, KT1 1QP <a href="http://www.odeon.co.uk">www.odeon.co.uk</a>	<b>7 mins</b>
<b>OMNIPLEX SUTTON</b>	St. Nicholas Shopping Ctr, St Nicholas Way, SM1 1AZ <a href="http://www.omniplexcinemas.co.uk">www.omniplexcinemas.co.uk</a>	<b>5 mins</b>
THEME PARKS		
<b>CHESSINGTON WORLD OF ADVENTURES</b>	Wood St, Kingston upon Thames, KT1 1TP	<b>30 mins</b>
<b>THORPE PARK</b>	3 St Nicholas Way, Sutton, SM1 1AY	<b>30 mins</b>
<b>LEGOLAND WINDSOR</b>	Ashley Rd, Epsom, KT18 5AB	<b>20 mins</b>
BOWLING		
<b>HOLLYWOOD BOWL</b>	Kingston Rd, Surbiton, KT5 9PB <a href="http://www.hollywoodbowl.co.uk">www.hollywoodbowl.co.uk</a>	<b>15 mins</b>
<b>TENPIN KINGSTON</b>	The Rotunda, Kingston upon Thames, KT1 1QJ <a href="http://www.tenpin.co.uk">www.tenpin.co.uk</a>	<b>15 mins</b>
OUTDOOR		
<b>KEW GARDENS</b>	127 Central Rd, Worcester Park KT4 8DY	<b>15 mins</b>
<b>WISLEY GARDENS</b>	178 Central Rd, Worcester PK, KT4 8HQ	<b>15 mins</b>
<b>HAMPTON COURT PALACE</b>	127 Manor Dr N, New Malden KT3 5PD	<b>5 mins</b>
<b>RICHMOND PARK</b>	158 Central Rd, Worcester Pk KT4 8HH	<b>15 mins</b>
<b>PAINSHILL PARK</b>	107 Central Rd, Worcester Pk, KT4 8DY	<b>15 mins</b>



## Worcester Park

### THE BROOK

181 Central Road  
KT4 8DR

OPEN LATE  
GREAT FOOD  
PUB GARDEN

### MILLER & CARTER

Church Road  
KT4 7RD

CLOSE BY  
GREAT STEAKS  
RESTAURANT

### NORTH END TAVERN

245 Gheam Common Road  
KT4 8ST

LIVE MUSIC  
SPORT  
CHEAP DRINKS

## Wimbledon

### THE ALEXANDRA

33 Wimbledon Hill Road  
SW19 7NE

GREAT COCKTAILS  
FOOD AVAILABLE  
HAS MUSIC AND ENTERTAINMENT

### PRINCE OF WALES

2 Hartfield Road  
SW19 3TA

LARGE TRADITIONAL PUB  
CHEAP FOOD  
LIVE MUSIC AND KARAOKE

### ROSE & CROWN

55 High Street  
SW19 5BA

GOOD SELECTION OF DRINKS  
FOOD SERVED  
NICE AREA

## Other Areas

### WILLOW TREE

Vale Road  
KT4 7ED

LOCAL PUB  
CHEAP FOOD  
LARGE GARDEN

### WOODIES

The Sportsground  
Thetford Road KT3 5DX

GOOD FOOD  
COOL DECORATION  
HAS A QUIZ NIGHT

### THE WATCHMAN

184 High Street  
KT3 4ES

CHEAP FOOD AND DRINK  
BREAKFAST AVAILABLE  
SERVES COCKTAILS





# RECYCLE YOUR WASTE

Our local council require us to recycle waste and have provided us with four bins. This guide will help you identify what you can put in each bin.



The bins are located in the kitchen area and are colour coded as above. We will sort any waste left in the bin located in your room. Do not hesitate to ask us any questions by sending us a message via the Airbnb app - we'll gladly help.



## PLEASE USE THE CORRECT GARBAGE CAN





something  
**WRONG?**

**TELL US**

We want everyone who stays with us to have a safe, comfortable and enjoyable experience. But, even with the best will in the world, sometimes things don't go according to plan.

If you find something isn't quite right or not to your liking, let us know so we can have the opportunity to help.

Don't be one of those guests who leave it until they leave to inform us of things we could have sorted as that doesn't help anyone.

# LEFT LUGGAGE SERVICES

If you need somewhere to leave your luggage either before check-in or after check-out, please ask us in advance. We will do our best to accommodate your request, but as we have full time jobs, it may not be possible. So you have options, here is a list of left luggage services in central London that you can also consider

## BOUNCE

[WWW.USEBOUNCE.COM](http://WWW.USEBOUNCE.COM)

FROM £4.90 PER BAG

OVER 300 LOCATIONS INCLUDING WATERLOO STATION, AND AIRPORTS

## LUGGAGE HERO

[WWW.LUGGAGEHERO.COM](http://WWW.LUGGAGEHERO.COM)

FROM £3.19 PER BAG

OVER 140 LOCATIONS INCLUDING MAIN TRAIN STATIONS

## RADICAL STORAGE

[WWW.RADICALSTORAGE.COM](http://WWW.RADICALSTORAGE.COM)

FROM £5 PER BAG

MOST TRAIN AND COACH STATIONS COVERED, INCLUDING WATERLOO AND VICTORIA

## STASHER

[WWW.STASHER.COM](http://WWW.STASHER.COM)

FROM £2.99 PER BAG

OVER 410 LOCATIONS, INCLUDING SHOPS, STATIONS, AND HOTELS

### AIRPORTS

HEATHROW T2, T3, T5

GATWICK NORTH TERMINAL

STANSTED ARRIVALS HALL

LUTON ARRIVALS ZONE A

### TRAIN STATIONS

CHARING CROSS MAIN CONCOURSE

EUSTON PLATFORM 16-18

KINGS CROSS MAIN CONCOURSE

LIVERPOOL STREET PLATFORM 10

LONDON BRIDGE UNIT SU64

PADDINGTON PLATFORM 12

ST PANCRAS MAIN CONCOURSE

VICTORIA PLATFORM 8



# Using the HOT TUB

## RELAX AND UNWIND IN OUR GARDEN

Simply book you time by sending us a message in the Airbnb app. We'll confirm by reply and you'll receive an email with a link to pay.



*it's hot!*

Temperature can be 40 degrees or more, but will cool during use.

### *things to note*

Subject to weather and availability. Guests aged 16+ only. No time limit on usage, but be mindful of other guests who may wish to use it. For use until 23:00 only. For your safety and our protection, CCTV covers the hot tub area. Payment is required before use. We will show you how to use it on your first use. Please place the cover on once you have finished your session (it keeps the heat in). Be considerate of our neighbours by keeping the noise levels low.

*enjoy!*



**£8**  
PER 1HR SESSION  
NOT PER PERSON

*please book in  
advance*



# operating the HOT TUB

1

Hold down the button shown for about 5 seconds until you hear a beep. This will unlock the pump.



2

To start the bubbles, press the button shown. The bubbles will start right away and will switch off automatically after 30 minutes.



## When you have finished

Don't turn the power off - leave the power as it is and place the cover back on top.





[www.brockbnb.com](http://www.brockbnb.com)